

# Emmanuel Methodist Preschool News

February  
Dates to Remember



## February 1

The Howard County Children On Board  
Child Care & Preschool Fair@ Ten  
Oaks BallRoom  
1-4 pm

## February 1

Tuition is Due Today

## February 6 & 7

Music with Ms. Tracy

## February 7

Scholastic Book Orders Due  
<https://clubs.scholastic.com/>  
Use Class Code: GKNJG

## February 10 & 11

Jump Bunch

## February 12-13

Chapel

## February 13-14

Class Parties

## February 17

No School – President's Day



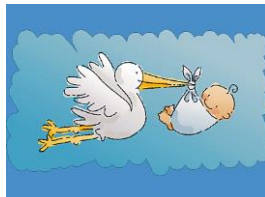
Thank you to Wendy Labofish, Megan Grosso, Natacia Wright and Yaniris Amador for helping with our vision and hearing screenings last month. We truly appreciate your help!

R  
is for  
Registration

February 2020

Thank you for your continue partnership! We had an amazing turnout for our Open House and during In-House and Open Registration for the 2020-2021 school year. We are currently at 86% capacity. We still have openings in our 3 year old and 4 year old programs. If you know anyone looking for a preschool, please pass this information along.

## Congratulations...



...to Naoume, Abyu and the Ephrem family on the birth of their baby boy recently!



## Owl Prowl

The owl prowl was a big success! The children and parents had a wonderful time. We were able to see a Barred Owl from the Howard County Conservancy and a Screech Owl from Wild Life Adventures. AND even more exciting... many preschoolers reported hearing an owl during the owl hunt in the woods.



## Tuition Payments Due

All tuition payments are due the first of each month. If you are using "Auto Payments" from your bank, please make sure it is set up so that your tuition payments are received by the 1<sup>st</sup> of each month. Payments received after the 9<sup>th</sup> (including Auto Pay payments) are considered late and a \$20.00 late fee will be charged to your account. If you are dropping off your payment in person, please place it in the white tuition box in the hallway. Office hours are Monday-Friday from 8:30 am- 3:30 pm.

Dates continued...

**February 20 & 21**

Music with Ms. Tracy

**February 25**

Fieldtrip to Fairland Gym-  
Ms. Kelly G, Ms. Kelly H/Ms.  
Stephane's Classes

**February 26**

Brookside Field Trip for  
Ms. Kathy, Ms. Joyce's classes

**February 27**

Brookside Field Trip for Ms.  
Karen's classes

*Vote for us!*



**hulafrog**

Vote for us in the Hulafrog  
survey as your favorite  
Howard County Preschool.  
The winner will be announced  
on  
Feb. 14 2019.

[https://hulafrog.com/laurel-columbia-md/subcategory-browse/?cat\\_id=16&subcat\\_name=Preschools&cat\\_name=Schools&subcat\\_id=73](https://hulafrog.com/laurel-columbia-md/subcategory-browse/?cat_id=16&subcat_name=Preschools&cat_name=Schools&subcat_id=73)



Join us on March 15<sup>th</sup> at  
9:00 am to celebrate the  
preschool at our Church  
service.



**Kindergarten Transition Form Reminder**

Thank you to All of the 4's families that were able to attend the "Where Do We Go From Here" information session on January 11, 2020.

You received one form, the **Transition to Kindergarten – Consent for Release of Information** early in January during the Transition to Kindergarten meetings. Please return this form to the main office by March 1, 2020.

As discussed and shared at the meeting, the **MSDE Learning Progress forms** will be mailed to Lisa Davis at the Howard County Department of Education and distributed to the appropriate schools in March. If you have any questions or concerns, please see your child's preschool teacher or the Director.

Howard County Kindergarten Registration begins March 9-13, 2020.

**Class Parties**



Be sure to check your class calendar for specific party dates and items needed.



Please remember to place additional clothes, socks and extra shoes in your child's backpack.



It is very important to check your email regularly regarding school closings and news. Most of our communication is done via email so please make sure the office has your current email address.

**Find us at...**

Tots2Tweens.com (<http://tots2tweens.com/directory/howard-county/preschools-early-learning-centers/>) to post comments and reviews.

Great Schools.org ( [www.greatschools.org](http://www.greatschools.org) ) to rate us and write a review about your family's experience here at Emmanuel Methodist Preschool.

Facebook.com (<http://www.facebook.com/pages/Emmanuel-Methodist-Preschool/219176434834080>) to "Like" us, post comments, or post pictures and comments of activities or events happening in and around the school.